

Solo Trombone

$\text{♩} = 60$

Trombone Concerto

John Mackey

7 4

14 **A** (falling in pitch, sighing, to silence)

22 **B**

27 *poco a poco accel.*

31

35

40

C $\text{♩} = 190$

45

50

54

* glisses last full notated duration throughout

Solo Trombone - 2

58 2 60

p *cresc.*

63

D *add growl* *fall*

ff

67

ff

72 *growl*

f *fff* *f*

78 ("feel" in 2, as if in 6/8)

p *ff*

83 **E** *gliss hit*

E *gliss hit*

fff 16 101

102 **F**

F *f* *ff* 3

110

f *ff*

Solo Trombone - 3

115 *f* 3 (rip) (rip) 3 3

121 129 *f* cresc. 5

131 *ff* *fff* *ff* G

136 *fff* *ff* (b)

140 *fff* *f* (b)

144 optional *S_{va}* 2

150 *f* *fff* *ff* growl gliss hits

154 *f* *f* *ffz* growl H 3

Solo Trombone - 4

161 *very wide vibrato* *norm.*
f *ff*

167 *fff* *ff* *fff*

172 *fff* *fff* *f* **I** *nasty, biting*

177 *cresc.*

182

187 *fff* *f* *quasi gliss* *fp* *f* *ff* **J**

192 **11** *relaxing slightly in tempo* **203** **4** *rit. (to circa ♩=160)* *n.* *ppp*

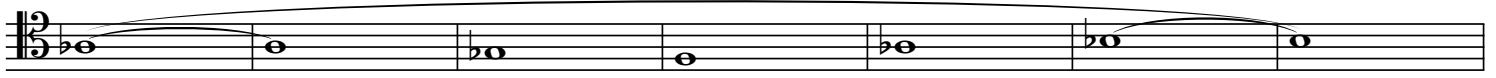
210 **K** ♩=174, ♩=87 *pp*

218

226 *p*

Solo Trombone - 5

234



241 *hold back...* *poco rit.*



pp

mp

251 **L** $\bullet = 164$ *poco a poco accel.*



pp

ppp

p

262



cresc.

mf

269 $\bullet = 190$

M



f

ff

276



fff

282 **N**

add growl
(pitch fall)

287 *flut.*

norm.

291

slightly relax tempo



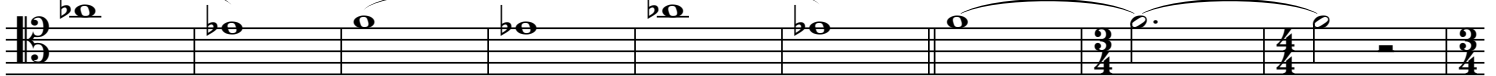
ffp

ff

fff

ff

294 *accel...* **O** $\bullet = 196$



303



ff

fff

screaming

310



ffp

add growl

Solo Trombone - 6

318 **P** $\bullet = 84$ 325

7

ppp

Detailed description: This staff contains measures 318 to 325. It begins with a dynamic marking 'P' in a box and a tempo marking of a quarter note equal to 84. A fermata is placed over measure 318. A fingering '7' is written above the first note in measure 319. The music consists of a series of half notes and whole notes, with a long slur spanning from measure 324 to 325. The dynamic marking *ppp* is centered below the staff.

330

Q

Detailed description: This staff contains measures 330 to 336. It features a series of half notes and whole notes, all connected by a long slur. A dynamic marking 'Q' in a box is positioned above the staff in measure 333.

337

6

Detailed description: This staff contains measures 337 to 348. It consists of a sequence of half notes and whole notes, all under a single long slur. A fingering '6' is written above the final note in measure 348.

349

pp *ppp* **R**

Detailed description: This staff contains measures 349 to 354. It features a series of half notes and whole notes, all under a long slur. The dynamic marking *pp* is below the first note, and *ppp* is below the last note. A dynamic marking 'R' in a box is above the staff in measure 353.

355 361

6

p

Detailed description: This staff contains measures 355 to 368. It begins with a fingering '6' above the first note. The music consists of half notes and whole notes, all under a long slur. A dynamic marking *p* is below the first note.

369

pp *p* *mp* *pp* **S**

Detailed description: This staff contains measures 369 to 374. It features a series of half notes and whole notes, all under a long slur. Dynamic markings *pp*, *p*, *mp*, and *pp* are placed below the staff at various points. A dynamic marking 'S' in a box is above the staff in measure 373.

375 378

3

pp *mp* *pp*

Detailed description: This staff contains measures 375 to 382. It begins with a fingering '3' above the first note. The music consists of half notes and whole notes, all under a long slur. Dynamic markings *pp*, *mp*, and *pp* are placed below the staff.

383

Detailed description: This staff contains measures 383 to 390. It features a series of half notes and whole notes, all under a long slur.

392 **T**

392 393 394 395 396 397

mp *mf*

Detailed description: This musical staff contains measures 392 through 397. It begins with a box containing the letter 'T'. The music consists of a series of half notes, mostly beamed together in pairs. The notes are: G4, A4, B4, C5, B4, A4, G4, F4, E4, D4, C4. There are dynamic markings of *mp* (measures 393-394) and *mf* (measures 395-397). A long slur covers the entire staff.

398

398 399 400 401 402 403 404

p *pp* *ppp*

Detailed description: This musical staff contains measures 398 through 404. It starts with a box containing the letter 'U'. The music features half notes and quarter notes, some with slurs. The notes are: G4, A4, B4, C5, B4, A4, G4, F4, E4, D4, C4. Dynamic markings include *p* (measures 398-399), *pp* (measures 400-401), and *ppp* (measures 402-404). A long slur covers the entire staff.

405 **U** ♩ = 124

405 406 407 408 409 410

Detailed description: This musical staff contains measures 405 through 410. It begins with a box containing the letter 'U' and a tempo marking of a quarter note equal to 124 (♩ = 124). The music consists of half notes and quarter notes, with some measures containing rests. The notes are: G4, A4, B4, C5, B4, A4, G4, F4, E4, D4, C4. The staff ends with a double bar line.

411

411 412 413 414 415 416 417

Detailed description: This musical staff contains measures 411 through 417. It consists of a series of rests in various time signatures: 7/8, 2/4, 7/8, 2/4, 7/8, 5/8, 7/8, 2/4.

418

418 419 420 421 422 423 424 425 426

2

Detailed description: This musical staff contains measures 418 through 426. It consists of a series of rests in various time signatures: 2/4, 4/4, 2/4, 7/8, 2/4, 7/8, 5/8, 4/4. A fermata with a '2' above it is placed over the final measure (426).

427 **V**

427 428 429 430

mp

Detailed description: This musical staff contains measures 427 through 430. It begins with a box containing the letter 'V'. The music consists of eighth notes and quarter notes, some with accents. The notes are: G4, A4, B4, C5, B4, A4, G4, F4, E4, D4, C4. A dynamic marking of *mp* is present at the beginning.

431

431 432 433 434 435 436

Detailed description: This musical staff contains measures 431 through 436. It consists of eighth notes and quarter notes, some with accents. The notes are: G4, A4, B4, C5, B4, A4, G4, F4, E4, D4, C4.

437 **W**

437 438 439 440 441 442 443 444

mf *p* *mf* *p*

Detailed description: This musical staff contains measures 437 through 444. It begins with a box containing the letter 'W'. The music consists of eighth notes and quarter notes, some with slurs. The notes are: G4, A4, B4, C5, B4, A4, G4, F4, E4, D4, C4. Dynamic markings include *mf* (measures 437-438), *p* (measures 439-440), *mf* (measures 441-442), and *p* (measures 443-444).

Solo Trombone - 8

445 **X**

mp *f* *mf* *stately* *poco a poco cresc*

452

458 **Y**

fff

461 **Z**

f

465

mp

472 **AA**

mp *mp* *f* *poco a poco cresc*

479 **BB**

mf *cresc.* *fff*

484

487 **CC**

p *mf*

493 **DD**

ff *f*

498

ff *f*

503 *poco a poco rit.* *molto allarg.* **EE** ♩ = 124

ff *mp*

509

514 521

523 **FF** *gliss hits*

mf

527 **GG**

f *mf*

532

f *mf*

536 **HH**

fp *ff*

Solo Trombone - 10

542

ff *f* *cresc.*

546

II

f *cresc.*

549 *rit.*

JJ ♩=104

f *ff* *f* *ff* *f* *fff*

554 *rit.* **Maestoso** *epic, Mahlerian* **molto allarg.**

rit. **Maestoso** *epic, Mahlerian* **molto allarg.**

559 **KK** ♩=124

ff *cresc.*

563

f *cresc.*

565

f *cresc.*

567

Sva

f poss.